

# "Peace be with you",

Jesus said to his disciples when he came to them.

What peace looks like we can see in this verse from Psalm 133  
(if we put the letter tiles in the right order!)

(Based on the BAS text)

B	R	E	E	T	E	N	A	S	A	Y	!	I	S	,	P	L	E	A	N	
T	H	R	O	O	D	N	I	T	O	G	E	I	T	O	W	D	H	L	I	V
E	N	N	U	O	H	,	R	I	T	H	E	H	O	W	H	N	T			
W	G																			


created by Astrid Schlueter, using Puzzlemaker at DiscoverySchool.com

## Completely out of the question!

Were the first Christians (according to Acts 4) against the idea of a

### NATIVE WORSHIPPER

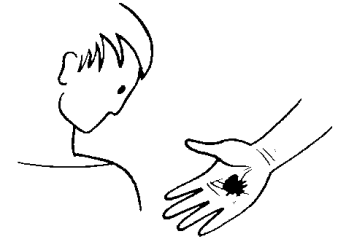
or got something confused here and what they really opposed was

\_\_\_\_\_ ?

\_\_\_\_\_ ?

Created by Astrid Schlueter, using Anagram Genius(tm) version 9

# Youth Bulletin



Second Sunday of Easter

April 11, 2021

### Today's lessons:

Acts 4:32-35

After the resurrection of Jesus the first Christians lived together as one big family, putting all their possessions together.

Psalm 133

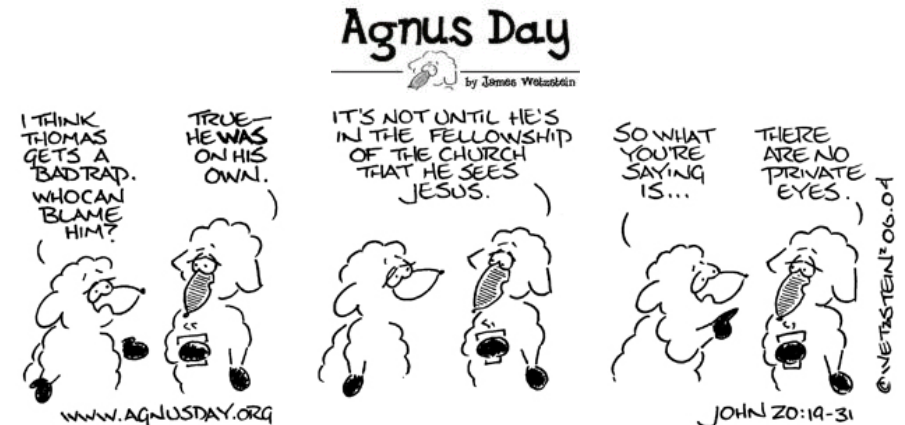
Living peacefully together is a special blessing from God.

1 John 1:1-2:2

Those who have witnessed Jesus with their own eyes tell others about what they have seen and heard, to draw others into the fellowship of the light.

John 20:19-31

The disciple Thomas turns from a sceptic into a model-believer when he sees the wounds that the crucifixion has left on the risen Christ.



Agnus Day appears with the permission of www.agnusday.org



# LIFE IN THE ~~LIME~~ LIGHT

If God is light – as the First Letter of John testifies – can you find the words from that letter in this light?

E A E E S E R S W Q D S C Z R  
 T T L C X U V E T O U C H E D  
 E O T I D E O I H Y R P I S C  
 R N T F T L C E E T O D L N L  
 N I I I N E R O T C A J D A U  
 A N L R O A S O M H E F R E F  
 L G T C S C E T W P G D E L H  
 J E R A L C E D I D L I N C T  
 P I H S W O L L E F H E R W I  
 F O R G I V E L N O Y A T E A  
 D E K O O L A H E A R D N E F  
 N G X N I E L O H W Y S X D S  
 E G I G V D A R K N E S S E S  
 E S H E T A C O V D A H Y W H  
 S T R A I L W L I F E E D F Q

- |          |            |           |           |
|----------|------------|-----------|-----------|
| ADVOCATE | ETERNAL    | JOY       | SACRIFICE |
| ATONING  | EYES       | LIAR      | SEEN      |
| CHILDREN | FAITHFUL   | LIFE      | SIN       |
| CLEANSE  | FATHER     | LIGHT     | SON       |
| COMPLETE | FELLOWSHIP | LITTLE    | TESTIFY   |
| DARKNESS | FORGIVE    | LOOKED    | TOUCHED   |
| DECEIVE  | HANDS      | REVEALED  | WHOLE     |
| DECLARE  | HEARD      | RIGHTEOUS | WORD      |

WORLD

created by Astrid Schlueter, using Puzzlemaker at DiscoverySchool.com

## SHOW AND TELL

Jesus shows Thomas the wounds of his crucifixion as the disciple wanted.  
 But what Jesus tells Thomas shows that there is a different way of coming to believe:  
 Can you decipher what Jesus says?!

A	B	C	D	E	F	G	H	I	J	K	L	M	N	O	P	Q	R	S	T	U	V	W	X	Y	Z
																						10			

3 2 8 4 4 8 22 26 14 8 17 16 7 4 8 21 16 7 16 26 10 8  
 20 7 17 4 8 8 20 26 20 22 19 8 17 16 26 10 8 11 7 1 8  
 V  
 V  
 V

created by Astrid Schlueter, using Puzzlemaker at DiscoverySchool.com